

ARB FITTING INSTRUCTIONS

ARB BULL BAR TO SUIT NISSAN GU PATROL

(SRS AIR BAG EQUIPPED MODELS)

• WITH FLARES

No 3217100

• WITHOUT FLARES

No 3217110

WARNING

FOR VEHICLES EQUIPPED WITH SRS AIRBAG
WHEN INSTALLED IN ACCORDANCE WITH THESE INSTRUCTIONS, THE FRONT PROTECTION BAR DOES NOT AFFECT OPERATION OF THE SRS AIRBAG.

TAKE NOTE OF THE FOLLOWING:

- THIS PRODUCT MUST BE INSTALLED EXACTLY AS PER THESE INSTRUCTIONS USING ONLY THE HARDWARE SUPPLIED.
- DO NOT USE THIS PRODUCT FOR ANY VEHICLE MAKE OR MODEL, OTHER THAN THOSE SPECIFIED BY ARB.
- DO NOT REMOVE LABELS FROM THIS BULL BAR.
- THIS PRODUCT OR ITS FIXING MUST NOT BE MODIFIED IN ANY WAY.

FITTING KIT No 6171438

USE	PART No	QTY	DESCRIPTION
CHASSIS BRACKET TO BULL BAR	3756395L	1	BRACKET CHASSIS
	3756395R	1	BRACKET CHASSIS
	6151135	4	NUT M12
	6151095	4	BOLT M12 X 30mm
	4581050	4	WASHER SPRING 1/2"
	4581071	4	SHOULDER WASHER M12
	4581070	8	WASHER M12
	CHASSIS BRACKET TO CHASSIS	4581088	2
6151096		8	BOLT M12 X 1.25 X 40mm
6151135		2	NUT M12 X 1.25mm
6151189		2	NUT M12 X 1.75mm
4581049		2	WASHER FLAT 1/2" X 1 1/8"
4581050		8	WASHER SPRING 1/2" X 1/8" X 1/8"
4581007		7	WASHER HEAVY DUTY 13mm
4581008		2	WASHER HEAVY DUTY OFFSET 13mm
BUFFERS, NO PLATE AND AIR DEFLECTOR TO BULL BAR	3500170	1	BUFFER KIT (LH & RH WITH FLANGE NUTS)
	3314438	1	AIR DEFLECTOR
	3314440	1	AIR DEFLECTOR EXTENSION
	6151017	13	BOLT M6 X 16mm
	6151046	13	WASHER FLAT 6mmZP
	6151128	13	NUT FLANGE M6
INDICATORS TO BULL BAR	3500080	1	ARB INDICATOR KIT

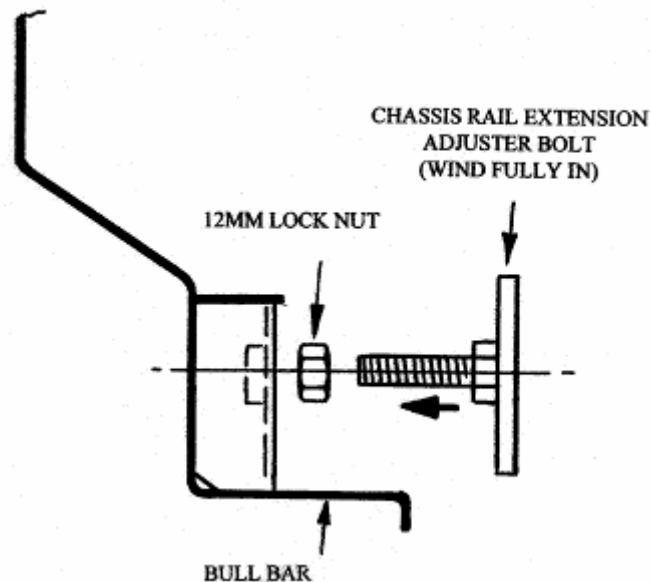
TOOLS REQUIRED

Basic tool kit and torque wrench.

ASSEMBLY SEQUENCE FOR BULL BAR INSTALLATION.

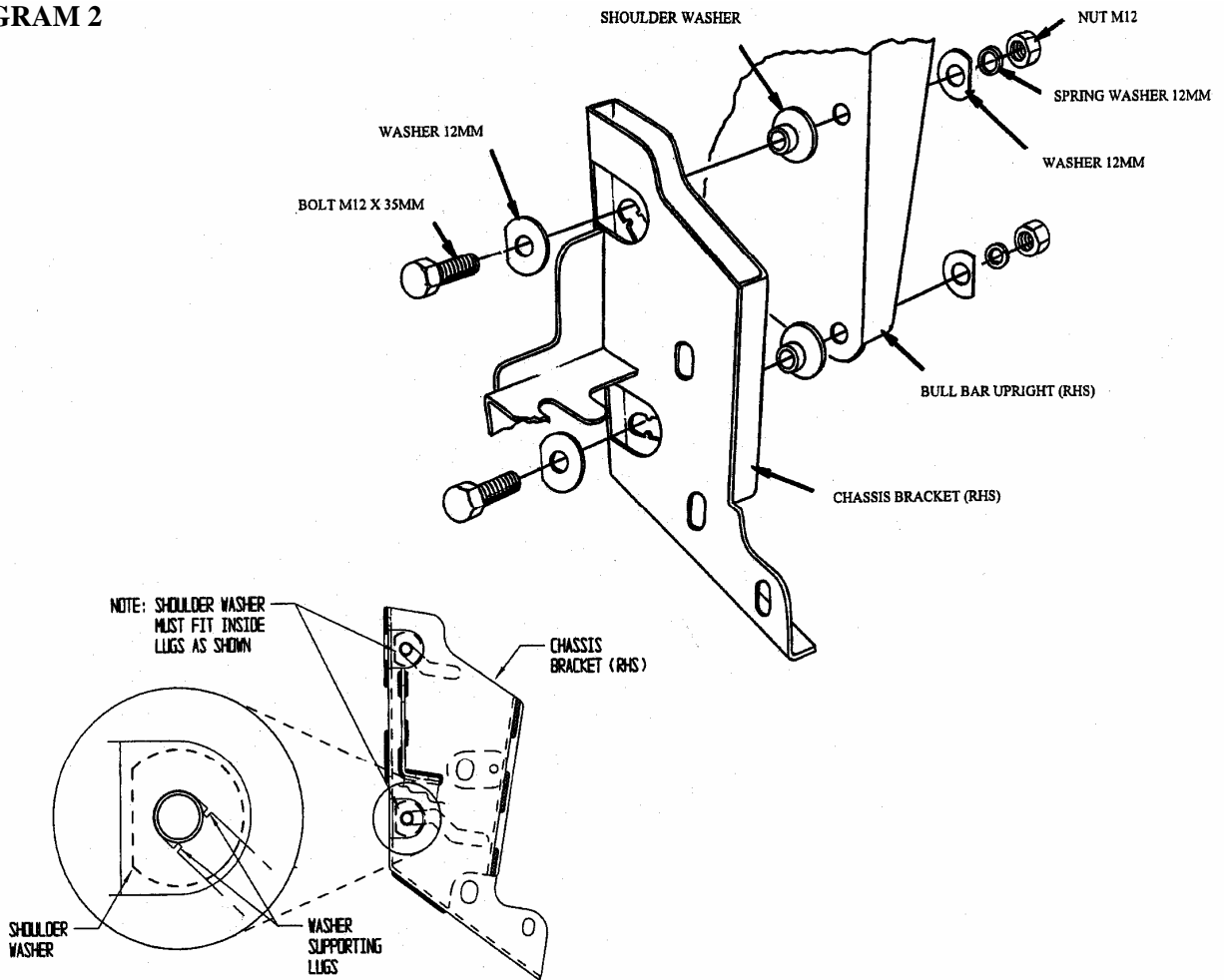
1. Remove the existing bumper.
2. Fit the number plate to the bull bar using two M6 bolts, flat washers and flange nuts.
3. Assemble a 12mm nut to each chassis rail extension adjuster bolt and screw fully into the bull bar. Do not tighten as this will need to be adjusted later. (Refer to diagram 1.)

DIAGRAM 1



4. Assemble the two chassis brackets to the bull bar using two per side M12 x 30mm bolts, M12 heavy duty washers, flat washers, shoulder washers, flat washers, spring washers and nuts. Tighten the bolts and torque to 110NM or 80 FT LB. (Refer to diagram 2.)

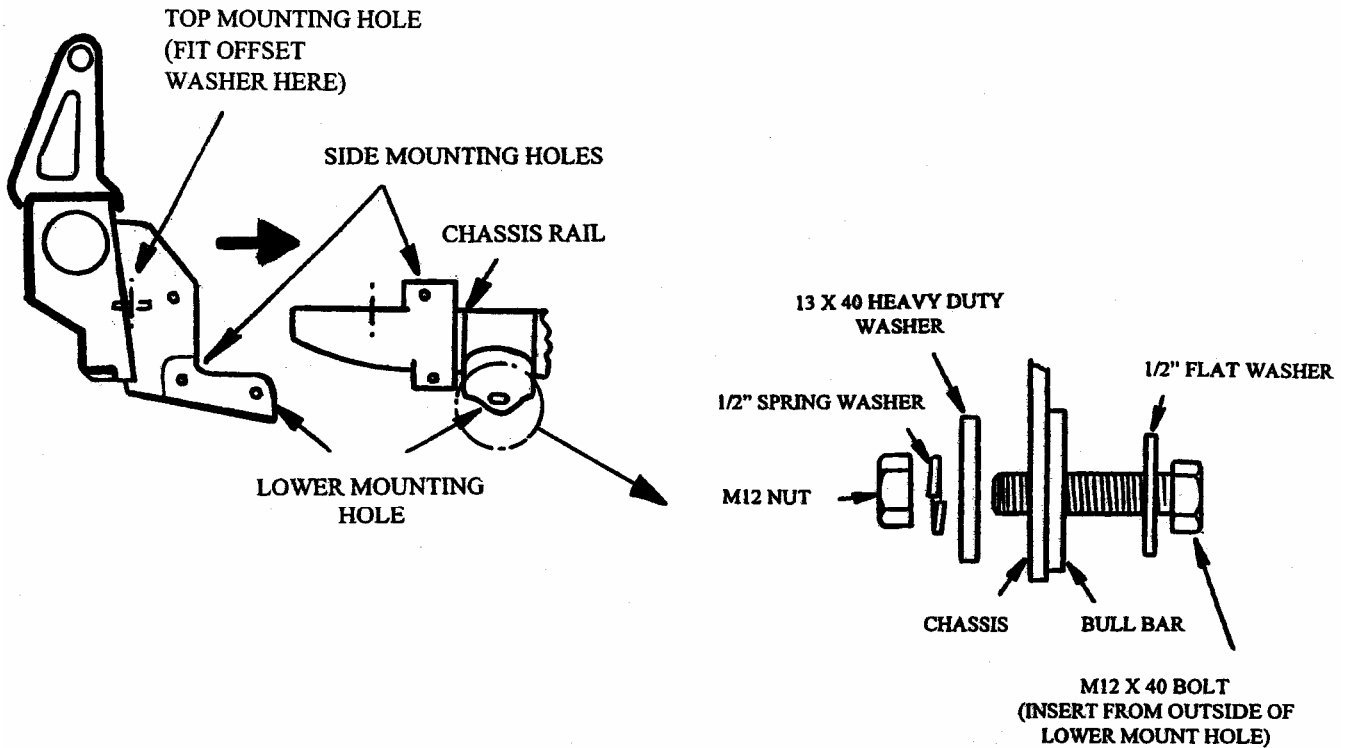
DIAGRAM 2



5. Assemble the two buffers on to the bull bar using the eight M6 flange nuts supplied.
6. Position the bull bar on top of the chassis rails and bolt into place using the M12 x 40mm bolts, heavy duty washers and spring washers. (Do not tighten.) Adjust the bull bar to achieve a uniform gap to the grill and mudguards. Tighten the bolts and torque to 110NM or 80 FT LB. (Refer to diagram 3.)

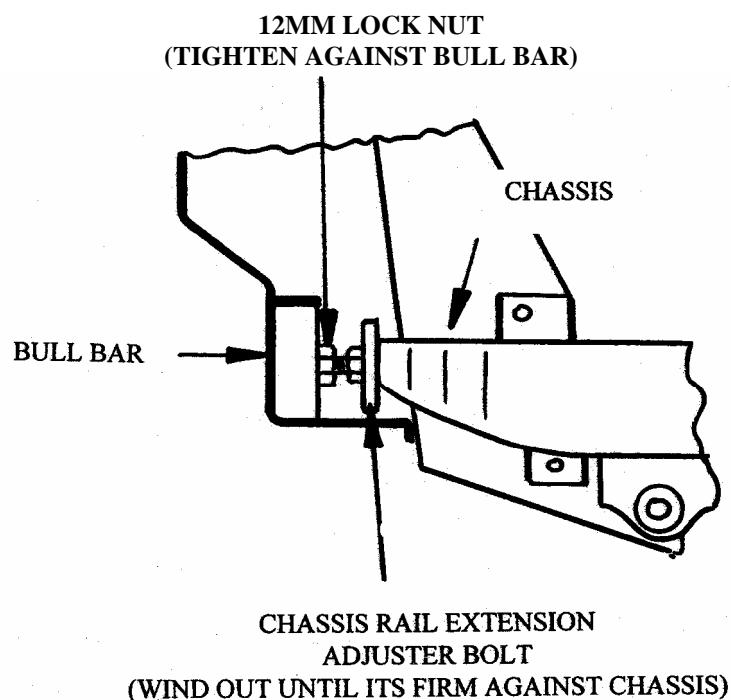
NOTE: Due to variation in the vehicle chassis rails it may be necessary to place a packer between the chassis rail top bolt and the bull bar. A heavy duty washer is supplied for this purpose. (Refer to diagram 3.)

DIAGRAM 3



7. Wind each impact absorber adjuster bolt out until it's firm against the chassis rail extensions and tighten the lock nut. (Refer to diagram 4).

DIAGRAM 4



8. Remove the indicators by first removing the top screw and retaining pin then slide the lens forward. Fit the indicators to the bull bar and connect the indicator looms to the existing indicator loom with the Scotchlocks supplied. Replace the indicators by sliding the indicators back into position, screw back into place then insert the retaining pin. Test to ensure the indicators function correctly.
9. Bolt the air deflector to the underside of the bull bar with the air intake opening facing forward using five M6 bolts, flat washers and flange nuts.
10. Fit driving lights if required.