

# ASFIR<sup>TM</sup> 4x4

OFF ROAD MASTERS



## Suzuki Vehicles



## Grand Vitara Eng. 2,0/2,4 Liter Petrol/diesel Auto' 2006-2014



**B<sub>1</sub>** P/N 515053

Front skid plate



**B<sub>2</sub>** P/N 515063

Gear / Transfer / Fuel pipes skid plate



**B<sub>3</sub>** P/N 515081 LWB  
P/N 515080 SWB

Exhaust skid plate (Petrol 2009-2014)



**C<sub>1</sub>** P/N 515039 LWB petrol  
P/N 515044 SWB

Detachable square tow bar (2009-2014)



**C<sub>2</sub>** P/N 515040 LWB

Towing Device, without spare wheel carrier (Petrol 2010-2014)



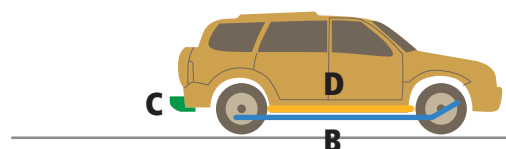
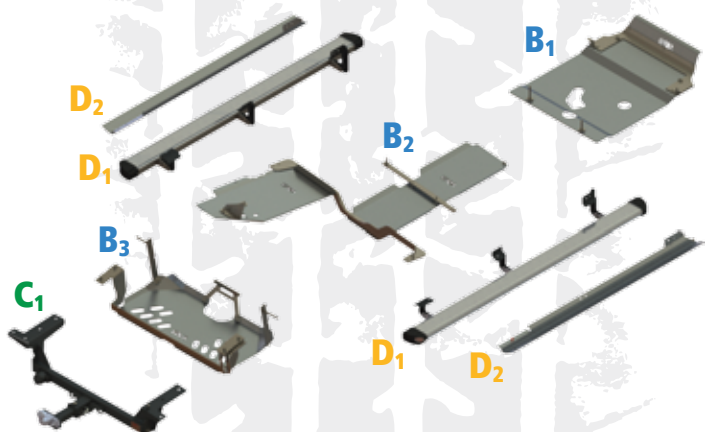
**D<sub>1</sub>** P/N 515050 LWB  
P/N 515051 SWB

Side steps (aluminum)



**D<sub>2</sub>** P/N 515059 LWB  
P/N 515052 SWB 09-14

Side covers (aluminum)



## Grand Vitara Eng. 1,6 Liter Petrol Auto' 1998-2005



**B<sub>1</sub>** P/N 515056

Front skid plate



**B<sub>2</sub>** P/N 515060 01-05

Transfer / Gear skid plate



**B<sub>3</sub>** P/N 515065  
LWB 98-03 / SWB 98-01

Transfer skid plate (diesel)



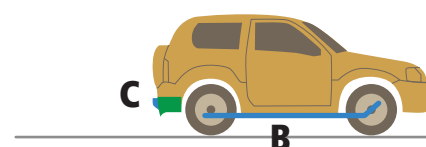
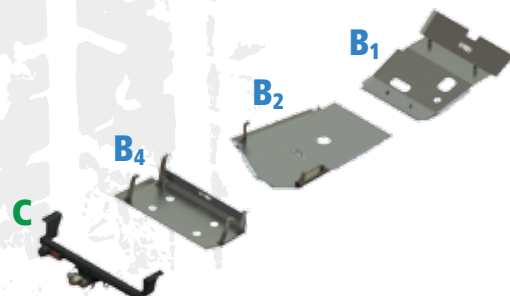
**B<sub>4</sub>** P/N 515070

Fuel tank skid plate



**C** P/N 515041

Detachable square tow bar





## Jimny Petrol 1997-2011

**A** P/N 517001 07-11



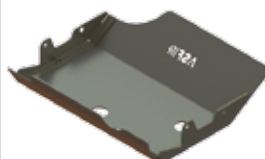
ATL winch bumper

**B<sub>1</sub>** P/N 517066 97-11



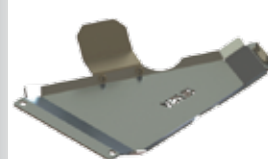
Front axle iron skid plate  
(Cannot be mounted with B<sub>2</sub>)

**B<sub>2</sub>** P/N 517056 06-11



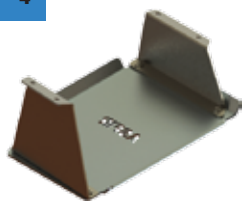
Steering rod & Differential protector  
(Cannot be mounted with B<sub>1</sub>)

**B<sub>3</sub>** P/N 517068 97-11



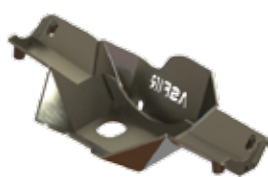
Transfer skid plate

**B<sub>4</sub>** P/N 517070 99-11



Fuel tank skid plate

**B<sub>5</sub>** P/N 517067 97-11



Rear axle iron skid plate

**C** P/N 517040 99-11

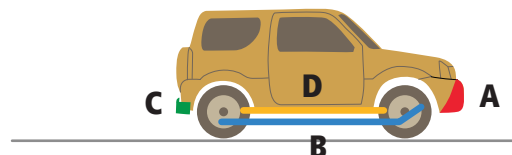
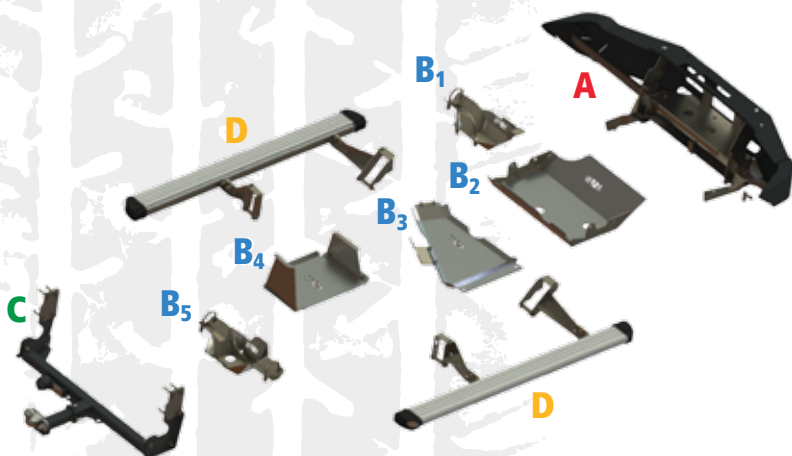


Detachable tow bar

**D** P/N 517051 3 doors  
P/N 517050



Side steps / protectors 04-10



**B<sub>2</sub>**



Steering rod & Differential protector

**B<sub>3</sub>**



Transfer skid plate

**B<sub>4</sub>**



Fuel tank skid plate

## Professional Quality Products

Asfir's variety of products is the perfect solution for accessorizing the off-road vehicle.

### ATL Winch Bumper

The innovative ATL winch bumper is designed and developed to replace the original bumper for concealed winch mounting. The bumper covers the winch but is not attached to it. It has many openings to ventilate the vehicle and enables easy access to the winch for maintenance.

ATL bumpers are characterized in low weight and in keeping close proximity to the vehicle's original contour lines.

### Skid Plates

Quality skid plates for off road vehicles have one of the highest design, performance and finish standards in the world.

Asfir offers a wide variety of skid plates such as front, fuel tank, transfer box, air condition, rear bumper and rear bench. The skid plates are made of quality aluminum and are screwed to original holes in the vehicle.

Service openings in the skid plates enable servicing the vehicle without dismantling the plates.

### Side Protectors

Protect the lower side of the vehicle and aid recovery with a jack. Designed by Asfir's Research & Development team and manufactured using the most up-to-date technology. The side protectors are made of quality metal combined with aluminum side steps.

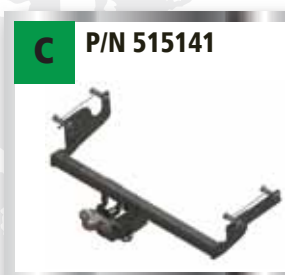
### Rear Towing Device

A quality towing device mounted to the vehicle's chassis under the original bumper.

## Crossover SX4 Auto' Petrol 2013-2014



Front skid plate



Detachable tow bar



**ASFIR**  
**4x4**

5.2014

QUALITY 4x4 ACCESSORIES

**ASFIR LTD**

Tel Adashim 19315, Israel

Telephone: +972-4-6511400

1-599-599-499\*

Fax: +972-4-6527742

E mail: info@asfir.com

www.asfir.com

\*(Israel only)



Distributed by :

