

RT25 SPECS/PART NUMBERS

Part Number: 75000

Capacity: 2500 lbs. (1134 kgs)

Rated Line Pull: 2,500 lbs. (1361 kgs) single-line

Motor\*: 12V DC, .9 hp (.7 kW) permanent magnet, Sealed

Control: Sealed handlebar-mounted mini-rocker control switch

Geartrain: All-metal 3-stage planetary

Gear Ratio: 154:1

Clutch (freespooling): Sliding pin and ring gear

Brake: patented disc brake

Rope: 50' Aircraft-grade Wire 3/16" diameter (15m, 5mm diam.)

Drum Diameter/Length: 2.0"/2.9" (52mm / 74mm)

Fairlead: Roller

Recommended Battery\*: 12 Amp/hour minimum

Battery Leads: 8 gauge

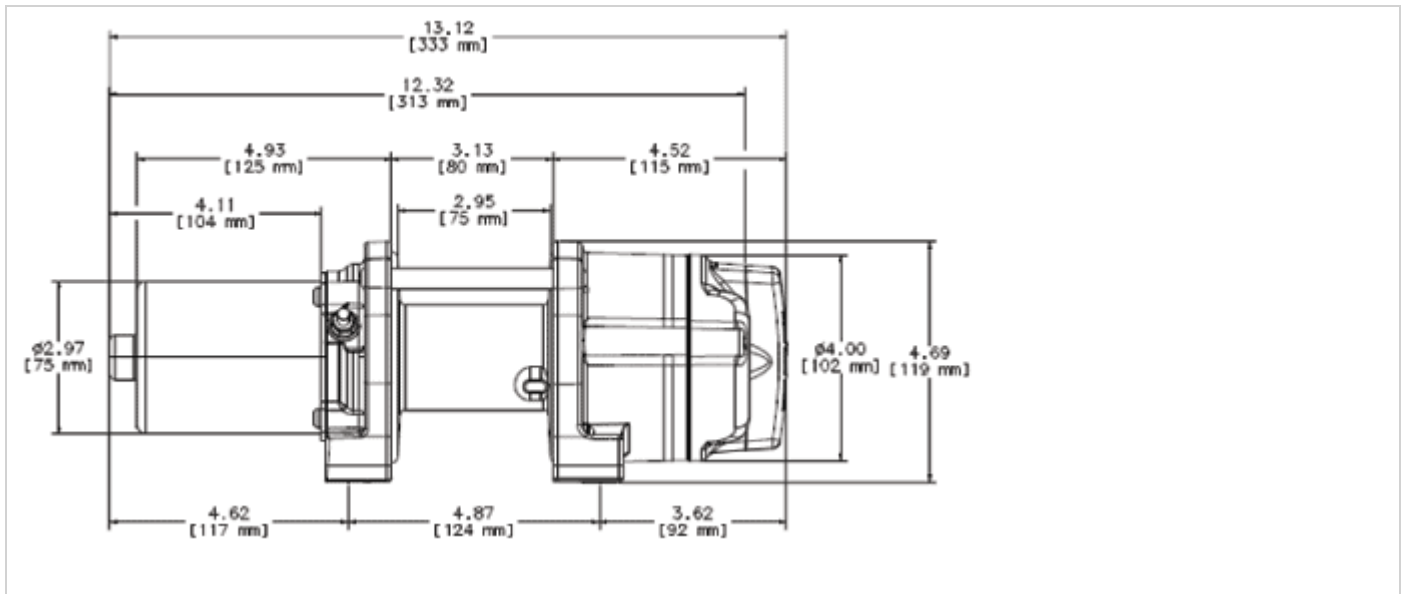
Duty Cycle: Intermittent

Warranty: Limited Lifetime (valid in USA and Canada only)

Winch Weight: 15.6 lbs. (7.1 kgs)

\*Designed for use with 12V DC battery systems only. No other voltage systems recommended:

PERFORMANCE DATA			PULL BY LAYER
Line Pull Lbs.(Kgs.)	Line Speed FT./min(M/min.)	Motor Current	Pull by layer layer/Lbs(Kgs.)
0	18 (5.5)	14	1/2500 (1134)
500 (227)	16 (4.9)	39	2/2150 (975)
1500 (680)	10 (3.0)	96	3/1845 (836)
2500 (1134)	5 (1.5)	157	4/1586 (719)



**Winch Dimensions:** 13.1" L x 4.5" D x 4.7" H (33.3cm L x 12cm D x 12cm H)

**Mounting Bolt Pattern:** 3.0" x 4.87" (76 x 124mm)